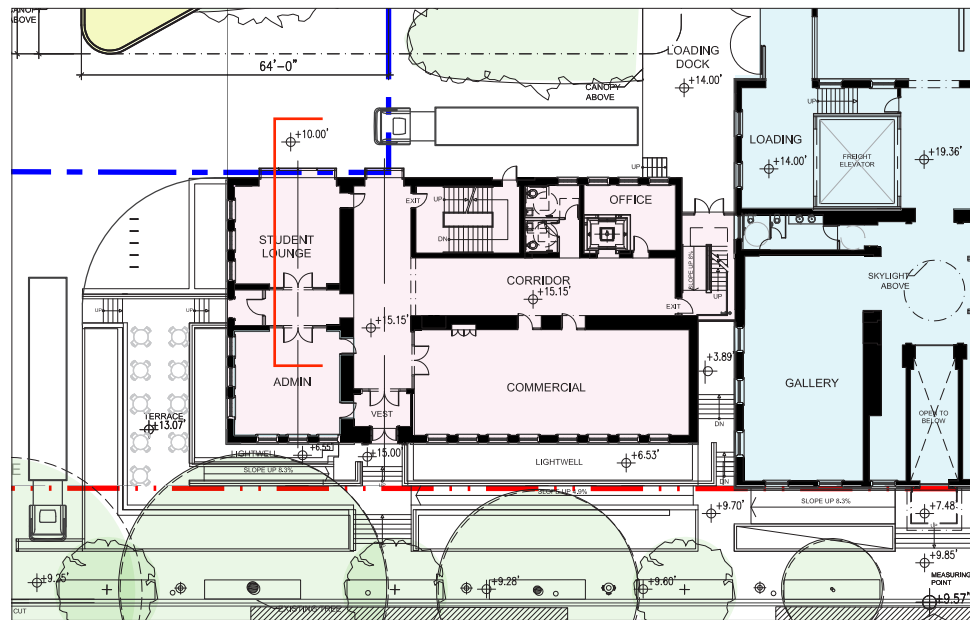


AREA OF DETAIL



RANDALL SCHOOL - WEST BUILDING

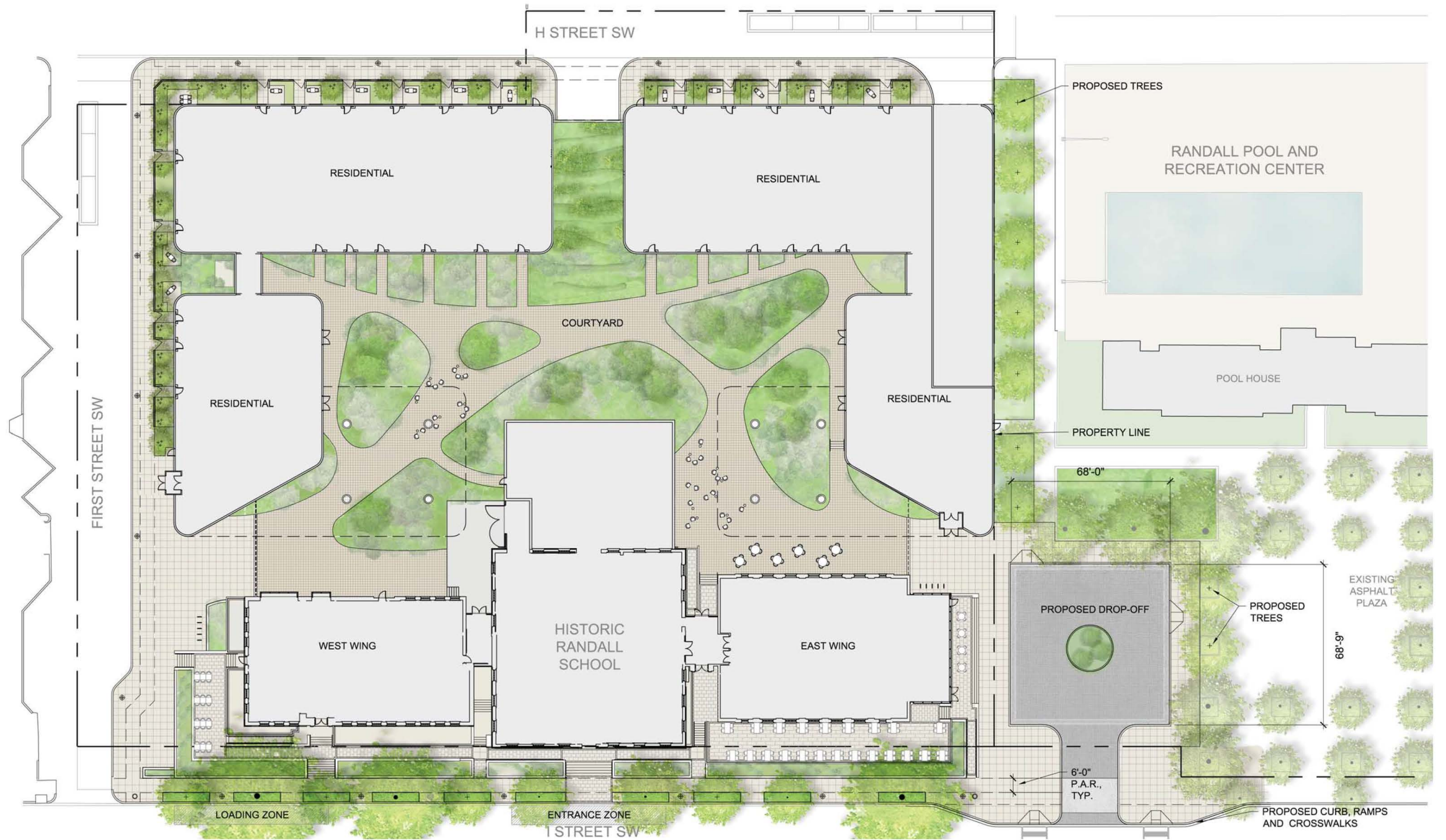


WEST BUILDING PLAN



WEST WING SECTION

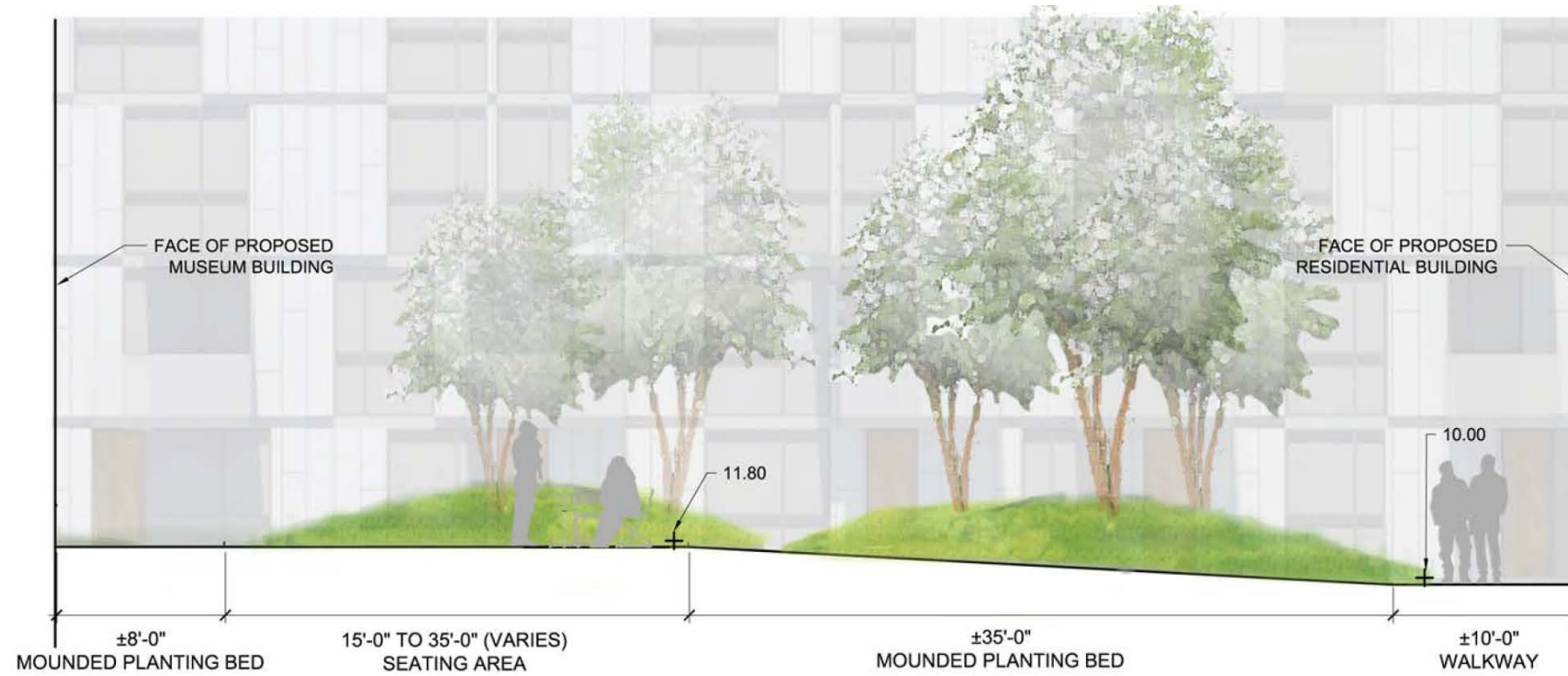
WEST BUILDING SECTION



SITE PLAN



COURTYARD PLAN



COURTYARD ELEVATION A-A



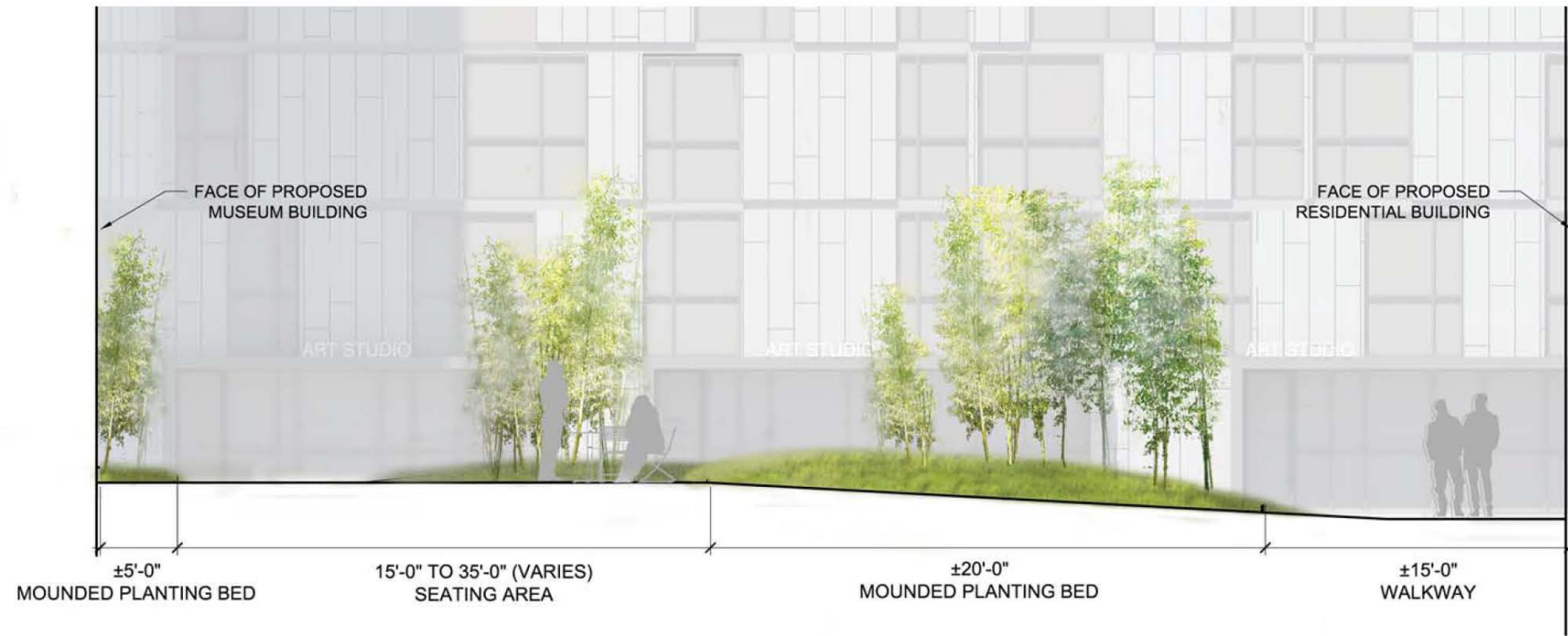
COURTYARD ELEVATION B-B



COURTYARD ELEVATIONS



COURTYARD PLAN - ALTERNATE



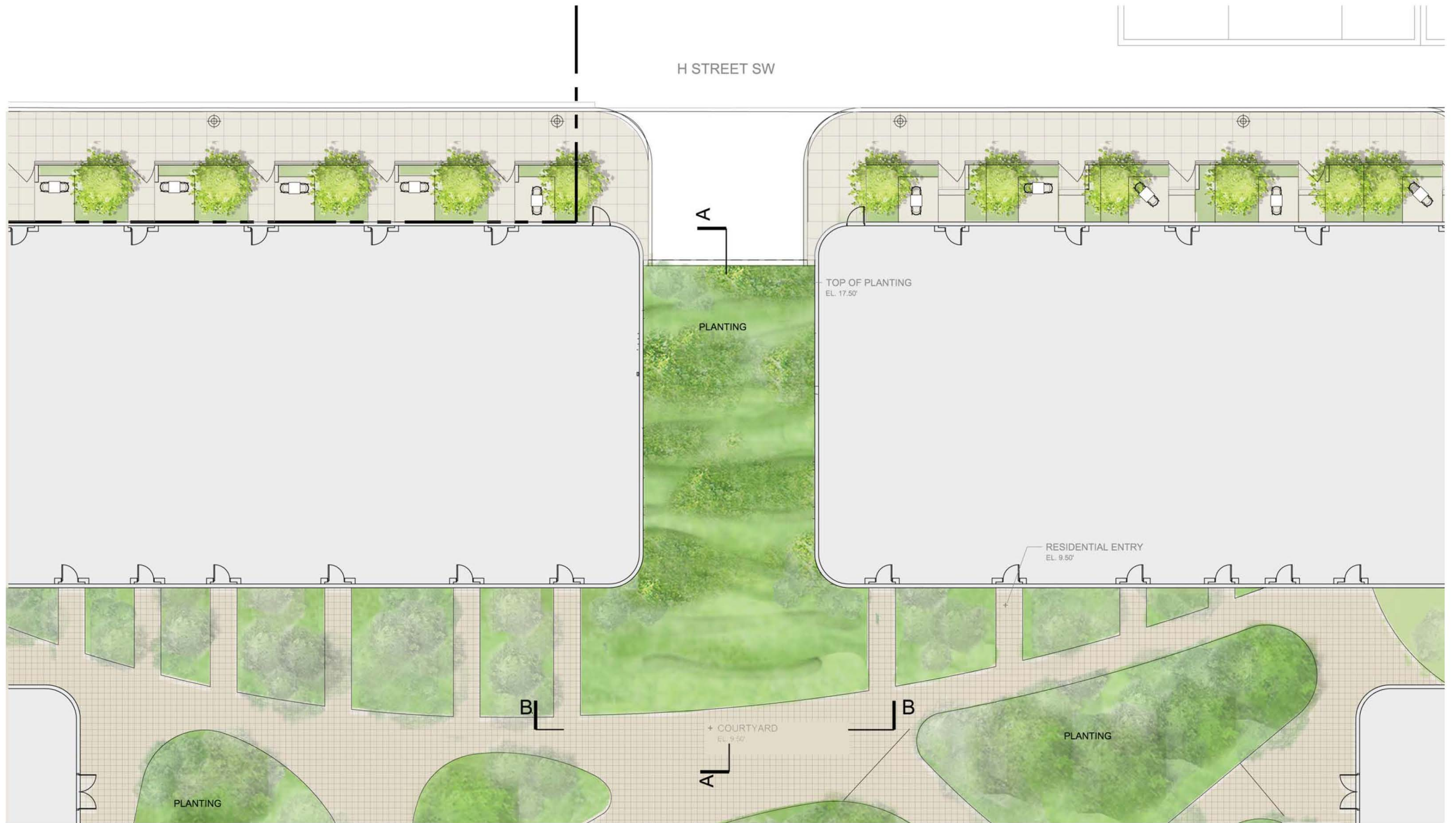
COURTYARD ELEVATION A-A



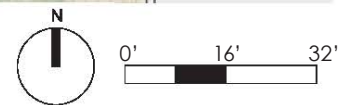
COURTYARD ELEVATION B-B



COURTYARD ELEVATIONS - ALTERNATE



GARAGE ENTRY TERRACE - PLAN





GARAGE ENTRY TERRACE - SECTION A-A

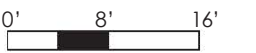
0' 16' 32'

GARAGE ENTRY TERRACE - ELEVATION





GARAGE ENTRY TERRACE - ELEVATION B-B





Maya Lin - Wavefield



*Alchemilla mollis*



*Athyrium nipponicum 'Pictum'*



*Carex platyphylla*



*Euphorbia myrsinites*



*Fargesia nitida*



*Hakonechloa macra 'Aureola'*



*Sagina subulata*



*Phegopteris decursive-pinnata*

### GARAGE ENTRY PLANTING PALETTE